

Gillette 2013 Annual Report/Financial Statement

As a not-for-profit hospital, Gillette Children's Specialty Healthcare is committed to timely and transparent financial reporting. We're happy to share our financial statement for fiscal year 2013 with you. If you have any questions about this statement, please contact Scott Ryberg at 651-325-2136 or SRyberg@gillettechildrens.com.

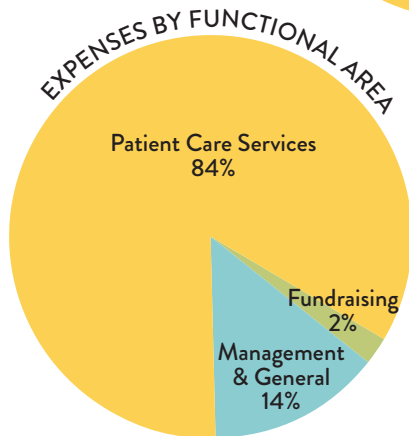
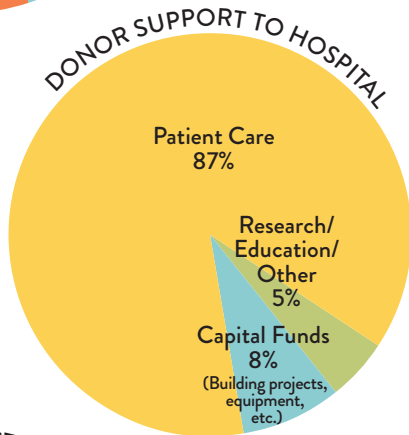
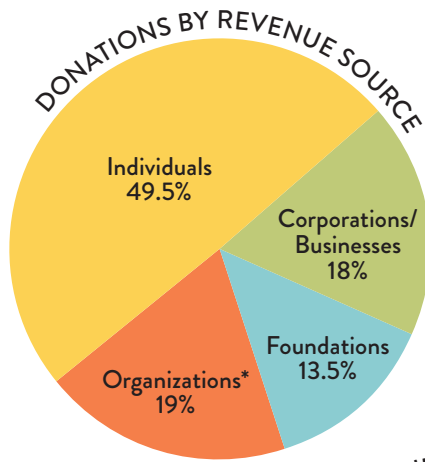
Operating Revenues and Expenses

As of December 31, 2013 and 2012	2013	2012
	(In Thousands)	
Total Net Revenue	\$ 208,062	\$ 191,462
Operating Expenses		
Salaries and Benefits	117,074	109,722
Service, Supplies and Other	64,238	57,461
Depreciation	12,528	11,704
MinnesotaCare Tax	3,287	2,929
Medical Assistance Surcharge	2,140	2,000
Total Expenses	199,267	183,816
Operating Income	8,795	7,646
Nonoperating Gains (Losses), Net	8,619	3,899
Excess of Revenue Over Expenses	17,414	11,545

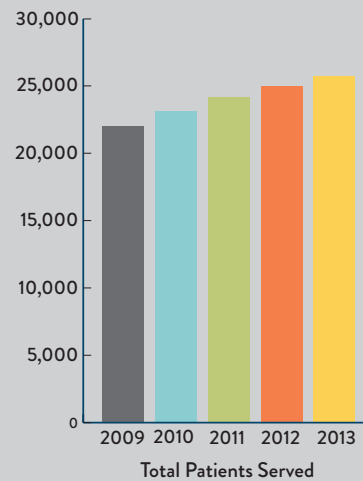
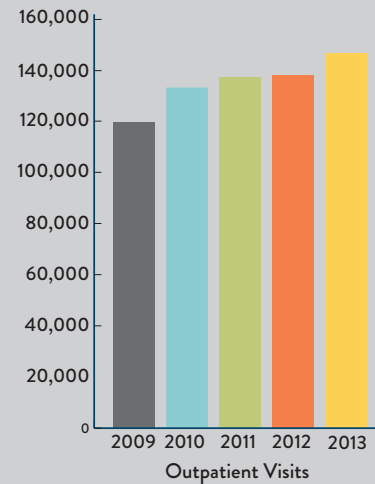
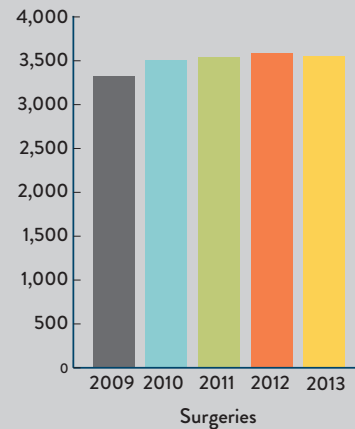
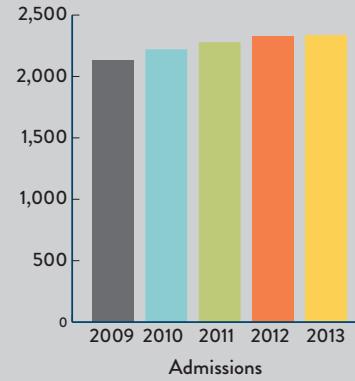
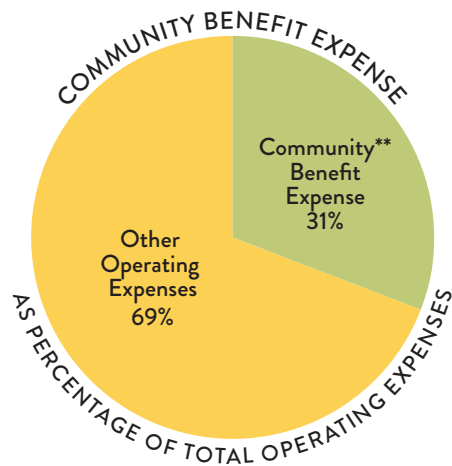
Condensed Balance Sheets

As of December 31, 2013 and 2012	2013	2012
	(In Thousands)	
Assets		
Current Assets		
Cash and Short-Term Investments	12,597	55,375
Accounts Receivable - Patient	31,117	26,082
Due From Foundation	581	531
Inventory	1,190	1,194
Other	5,433	3,360
Total Current Assets	50,918	86,542
Long-Term Investments	72,353	3,919
Assets Limited as to Use	13,778	34,723
Beneficial Interest in Net Assets of the Foundation	17,923	14,772
Property, Plant and Equipment, Net	94,819	94,109
Other Noncurrent Assets	5,895	6,286
Total Noncurrent Assets	204,768	153,809
Total Assets	255,686	240,351
Liabilities and Net Assets		
Current Liabilities		
Accounts Payable	5,410	6,448
Current Maturities of Long-Term Debt	3,054	2,936
Accrued Salaries and Benefits	10,850	11,292
Other	2,176	1,858
Total Current Liabilities	21,490	22,534
Long-Term Liabilities		
Deferred Compensation Payable and Other	6,499	5,495
Long-Term Debt	48,277	51,449
Total Long-Term Liabilities	54,776	56,944
Total Liabilities	76,266	79,478
Net Assets		
Net Assets - Unrestricted	172,247	154,714
Net Assets - Restricted	7,173	6,159
Total Net Assets	179,420	160,873
Total Liabilities and Net Assets	255,686	240,351

Patient Statistics 2009-2013



Source: Consolidated Financial Statements of 12/31/13



* Non-for-profit organizations, excluding foundations.

** Money spent to supply free or discounted care for families in need, as well as services designed to improve community health care or health care access.